

# Stratton Playgroup

New Road, Stratton, Bude, Cornwall EX23 9AP

Telephone: 01288 356135 E-mail: strattonplaygroup@hotmail.co.uk

Website: www.strattonplaygroup.uk Ofsted No.: 102959 Registered Charity No.: 1038250



## Term Dates

Half-Term

Mon 17<sup>th</sup> Feb - Fri 21<sup>st</sup> Feb

Last Day

Fri 4<sup>th</sup> April

Start of Summer Term 2024

Tues 22<sup>nd</sup> April

Bank Holiday

Mon 5<sup>th</sup> May

Half-Term

Mon 26<sup>th</sup> May - Fri 30<sup>th</sup> May

Last Day

Tues 15<sup>th</sup> July

Leavers Party

Weds 16<sup>th</sup> July

## In this month's Newsletter

*Some photos of what we have been up to.....*

*Staff Profile - Edwina*

*Attendance Policy*

*Breakfast club*

*Cutting up foods*

*Safer Internet day - Keeping children safe online*

*Staff Training Updates*

*Exciting new Outdoor Learning*

*Lending Library News*





## Getting to know the team

Up Next - Edwina

### Staff Profile



**Name** Edwina Williams

### Roles and Responsibilities

To provide administrative / financial administrative, and day to day operational support to the Playgroup management & committee.

### About me

I am married to Dave and have 2 grown up boys - Joe & Sam, and 1 girl - Ruby, who is currently in her first year at university.

I enjoy reading, computers, family time, researching our family tree; and short breaks away in our motorhome, exploring new places.

### Have long have you worked at playgroup?

I have worked at Stratton Playgroup since July 2005.

### How would you like to see playgroup develop?

I have seen our playgroup grow enormously over the years, and long may it continue. Stratton Playgroup is an essential part of the community in Stratton & Bude, supporting local families and their children.

## Attendance policy

**Parents/Carers are responsible for:**

- Ensuring that their child attends playgroup regularly unless prevented from doing so by illness or attendance at a medical appointment.

- Contacting the playgroup on the first morning of absence. Providing us with details of the reason for their absence.
- Informing the playgroup in advance of any medical appointments, in playgroup time.
- Informing the playgroup in advance of any holidays or days out, in playgroup time.
- Talking to the playgroup as soon as possible about any child's reluctance to come to playgroup so that problems can be quickly identified, and a support strategy can be put in place.

***You can inform us by phone, email or on the 'Family' app.***

***Where we have not received reasons for a child's absence, we will then ring to you.***

### **Reminder- breakfast club**

We do offer a breakfast club. Open from 8:15am, this can be used as part of your child's funding. Our morning session starts from **9am**.

### **Cutting up foods in children lunch boxes**

It is our safer food policy that certain foods are cut up.

**This includes.....**

Grapes - cut lengthways

Cherry tomatoes - cut into quarters

Large blueberries - cut in at least half

We don't recommend that you cut bananas but if/we do it must be length ways.

Sausages/cocktail sausages cut lengthways.

### **Fresh fruit/vegetables**

We do advise that children do have at least one portion of fresh fruit or vegetables in their packed lunch.

### **Safer internet keeping children safe online**

Please see some links below about keeping children safe online

[Supporting preschoolers online \(0-5s\) | Internet Matters](#)

[Pre-school \(0-5\) online safety tips and advice | Internet Matters](#)

### **Staff training update**

#### **Anna**

Special Educational Needs and Disabilities (send) network meeting

Update Safeguarding and prevent training

Neuro Diversity profiling toolkit

Nasan Level 3 SENCO Award (which is an accredited 12-week course)

#### **Kelly**

Managers network meeting

Updated Prevent Training

Designated safeguarding lead (DSL) updates

Early years policy update: what's changing in 2025

#### **Liv**

Updated Prevent Training

Updated Safeguarding Training  
Speech and Language Communication Progression Tool

**Harri**

Neuro Diversity profiling toolkit

Little Eden - Nature connected to learning and play in early years

Little Eden Fire and Dragon

Emotion coaching

**Gemma** is booked on to attend Makaton training

**Exciting new outdoor learning**

Harri will be taking the lead with some new exciting outdoor learning, more information to follow.....

**Lending library news**

The children love talking to us about the books they have read at home and who they have enjoyed their story with.

**5 book awards.....**

Paige, Jenson and Rosie

**10 Book awards.....**

Keira, Luke and Arlo

**15 book awards.....**

Grace and Jackson

**20 book awards.....**

Paddy, Myles

**30 book award.....**

Felicity

Thank you for your time in reading **this newsletter**, if you have any questions please speak to a member of staff.

Kelly and all the team 😊



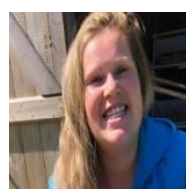
Kelly



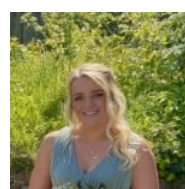
Anna



Sam



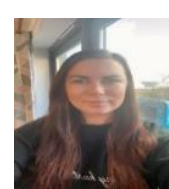
Harri



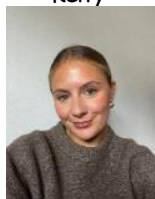
Roxy



Kayleigh



Gemma



Liv



Edwina